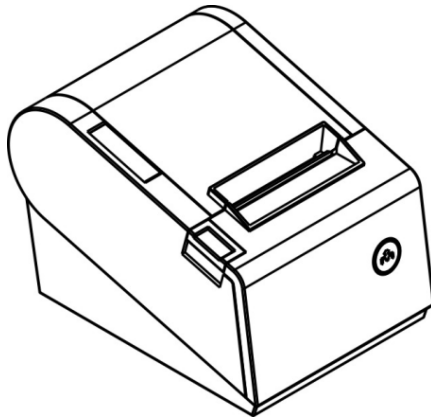


---

# User's Manual

GP-80160IIN

THERMAL RECEIPT PRINTER



Proficient in Commercial POS Receipt Printers

## **Safety Notice**

- \* Don't touch the head of printer with anything.
- \* Don't touch the cutter blade.
- \* Don't bend the power cord excessively or place any heavy objects onto it.
- \* Don't use the printer when it is out of order. This can cause a fire or and electrocution.
- \* Only use the power cord excessively or place any heavy objects onto it.
- \* When connecting or disconnecting the plug, always hold the plug-not the cord.
- \* Keep the desiccant out of children's reach.
- \* Use only approved accessories and do not try to disassemble, repair or remodel it for yourself.
- \* Install the printer on stable surface, choose firm, level surface where avoid vibration.
- \* Don't let water or other foreign objects in the printer.
- \* Don't connect a telephone line into the peripheral drive connector.
- \* We recommend that you unplug the printer from the power outlet if no use it for long periods.

## **Available fields**

- \* Print POS system Receipts
- \* Print EFT POS system Receipts
- \* Print Gym, Post, hospital, civil aviation system Receipts
- \* Print Inquiry, Service system Receipts
- \* Print Instrument test Receipts
- \* Print Tax, Tab Receipts

## Main Features

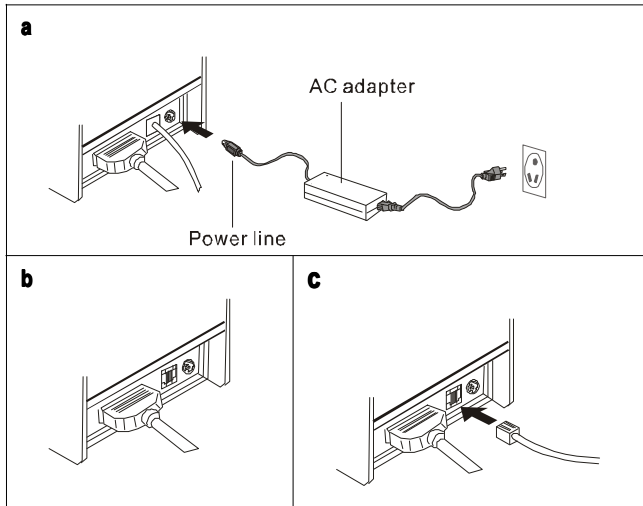
- \* Command protocol is based on ESC/POS standard
- \* Low-noise thermal printing. Support Parallel/Serial/USB/Bluetooth interface
- \* Various Layouts are possible by using page mode.
- \* Repeated operation and copy printing are possible.
- \* Character font size optional.
- \* Easy paper-roll installation.
- \* Easy paper jams clearance.
- \* Easy maintenance for tasks such as head cleaning.
- \* Built-in interface provides control capability for cash drawer

## Technique Spec.

|                      |  |
|----------------------|--|
| Print method         | Thermal line printing  |
| Print speed          | 160mm/ sec.  |
| Paper width          | 79.5±0.5mm   |
| Print columns        | 576dots/line 512dots/line  |
| Character            | ANK Character: Font A: 12*24dots<br>Font B: 9*17dots<br>Simplify/Traditional: 24*24 dots |
| Print command        | Compatible with ESC/POS  |
| Interface            | Parallel/Serial (RS232C)/USB/Bluetooth   |
| Barcode mode         | UPC-A/UPC-E/JAN13(EAN13)/JAN8(EAN8)/CODE39/<br>CODABAR/CODE93/CODE128                    |
| Reliability print    | 150 kilometers   |
| Paper thickness      | 0.06~0.08mm  |
| Adaptor power input  | AC 110V/220V, 50~60Hz  |
| Adaptor power output | DC24V/2A   |
| Printer power input  | DC24V/2A   |
| Cash Drawer          | DC 12-24V/1A   |
| Work Temperature     | 0~45°C, Dampness: 10~80%   |
| Storage temperature  | -10~50°C, Dampness: 10~90%   |

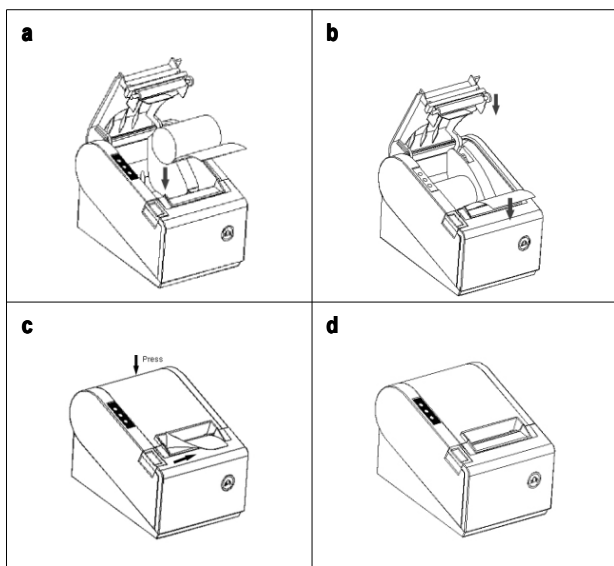
## Connection

- a.** Connect the adapter cable to power connector of the printer.
- b.** Connect the interface cable to the connector on the rear panel of the printer.
- c.** Connect the cash drawer's RJ-11 phone jack to the connector on the rear panel.



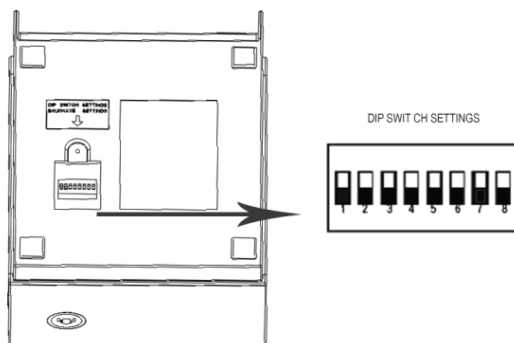
## Paper Roll Installation

- a.** Open the top cover, install the paper roll as the picture showing direction.
- b.** Set the paper roll into the hollow, and pull on the leading edge of the paper toward you as shown:
- c.** Press the center of printer cover firmly to prevent paper miss loading.
- d.** Tear off the paper outside the cover as shown.



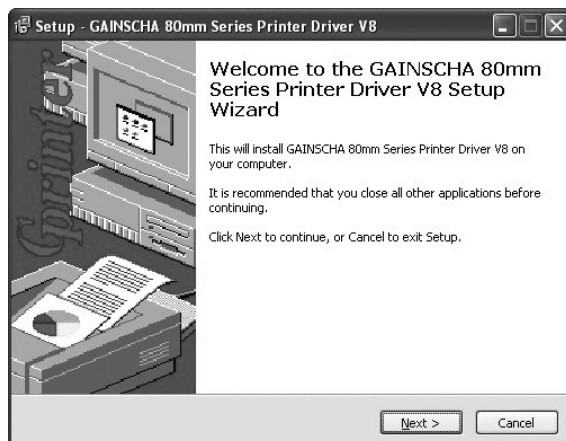
## Set Print Mode (DIP Switch)

Set print mode by the DIP Switch, such as Cutter, Language, Beep, Density, Speed mode...

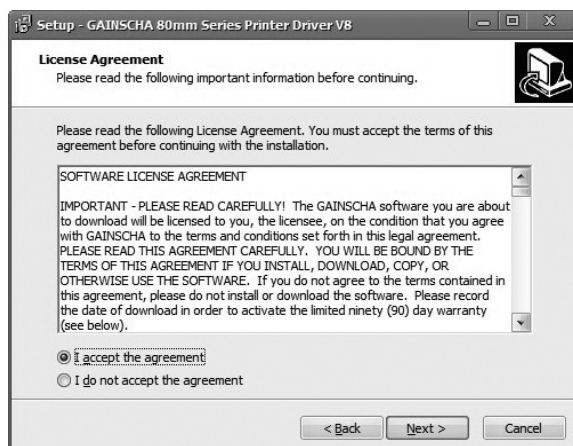


## Driver Installation

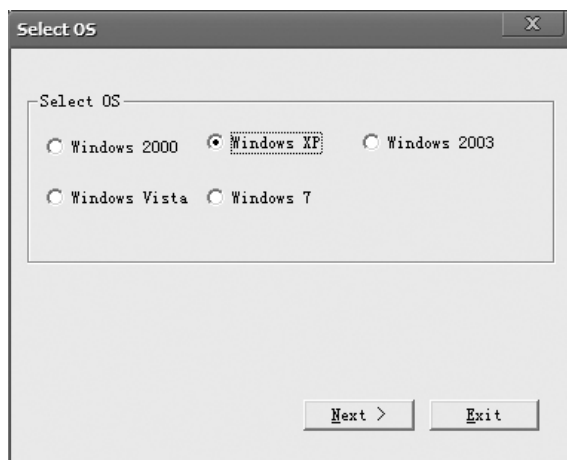
- a. Insert the driver CD disk, run the GP80DRV CN V8 to set up.



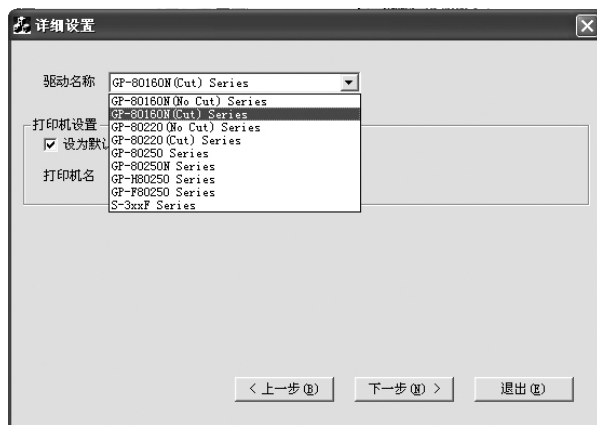
- b. Read and accept the terms to continue the setup



c. Select the operation system that you're using, then click "next" to continue.



d. Select GP-160N(Cuts) Series to continue.



e. Select the corresponding printer port.

